



Choose the University of Liège

- Choose openness
- Choose excellence



Université
de Liège





I. Table of contents

I. Liège

II. The University of Liège

III. A university open to the world

IV. Structure of studies in French-speaking Belgium

V. Making the most of specialised and unique courses

VI. Specific aid for international students

VII. Culture, sport and student life at ULg

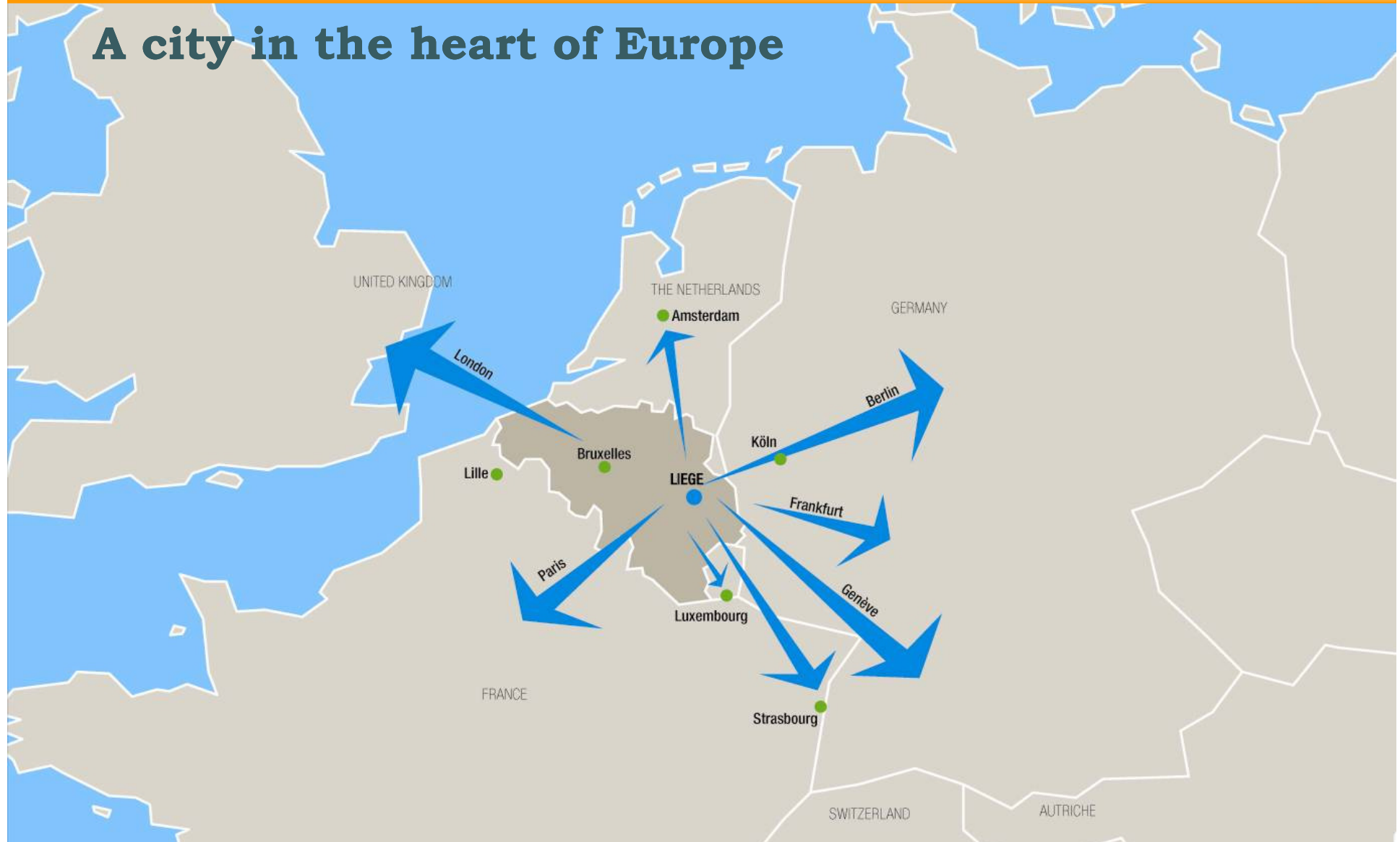
VIII. Admission procedures

I. Liège





A city in the heart of Europe





A city in the heart of Europe

- ✓ *A major Belgian city at the crossroads of 3 communities*
 - a French-speaking city
 - within easy reach of the Flemish and German-speaking communities

- ✓ *An international city*
 - a mixed population
 - a city with a focus on interculturality

- ✓ *The European crossroads of economic, political and cultural life*
 - 30 minutes from Germany and Holland
 - 60 minutes from Brussels and Luxembourg
 - 2:15 from Paris
 - 3:30 from London



A modern city

- 250 000 inhabitants - 600 000 in the city and its surrounding areas
- major city
- a « green » region





A modern city

- high-speed rail link (Paris, Cologne, London)
- major motorway network
- easy urban mobility
- airport
- e-administration



Université
de Liège



A thousand-year-old historical city



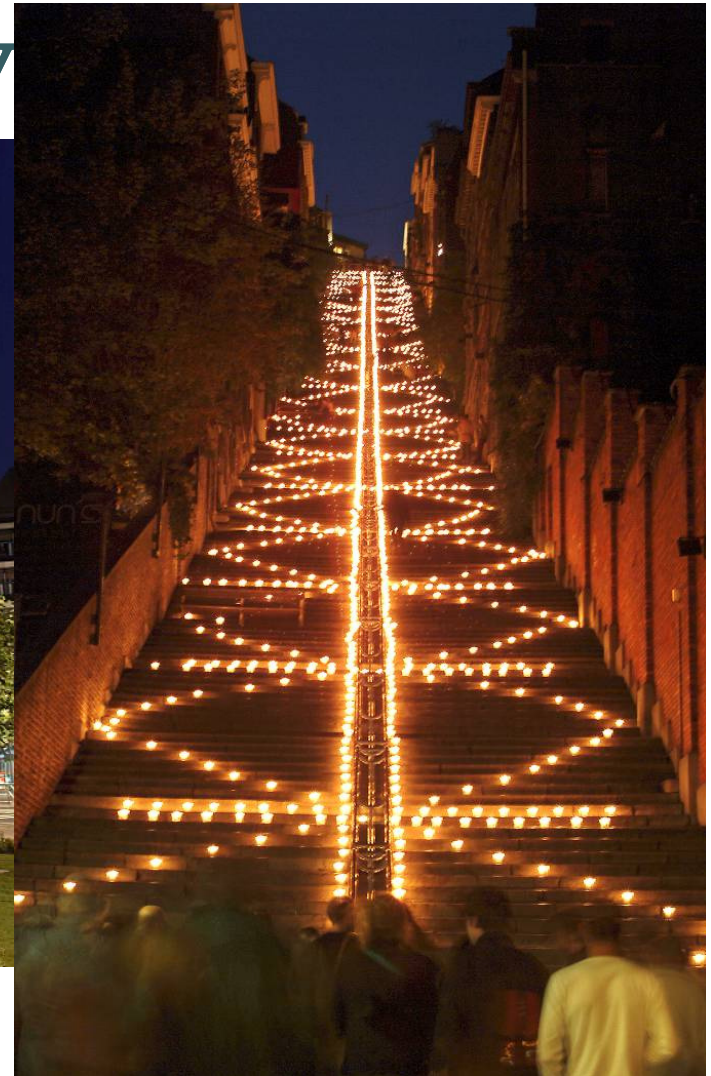


A thousand-year-old historical city





A thousand-year-old historical city





A student town

- 40 000 students in higher education
- hundreds of events every year
- a lively student life





A city full of opportunities

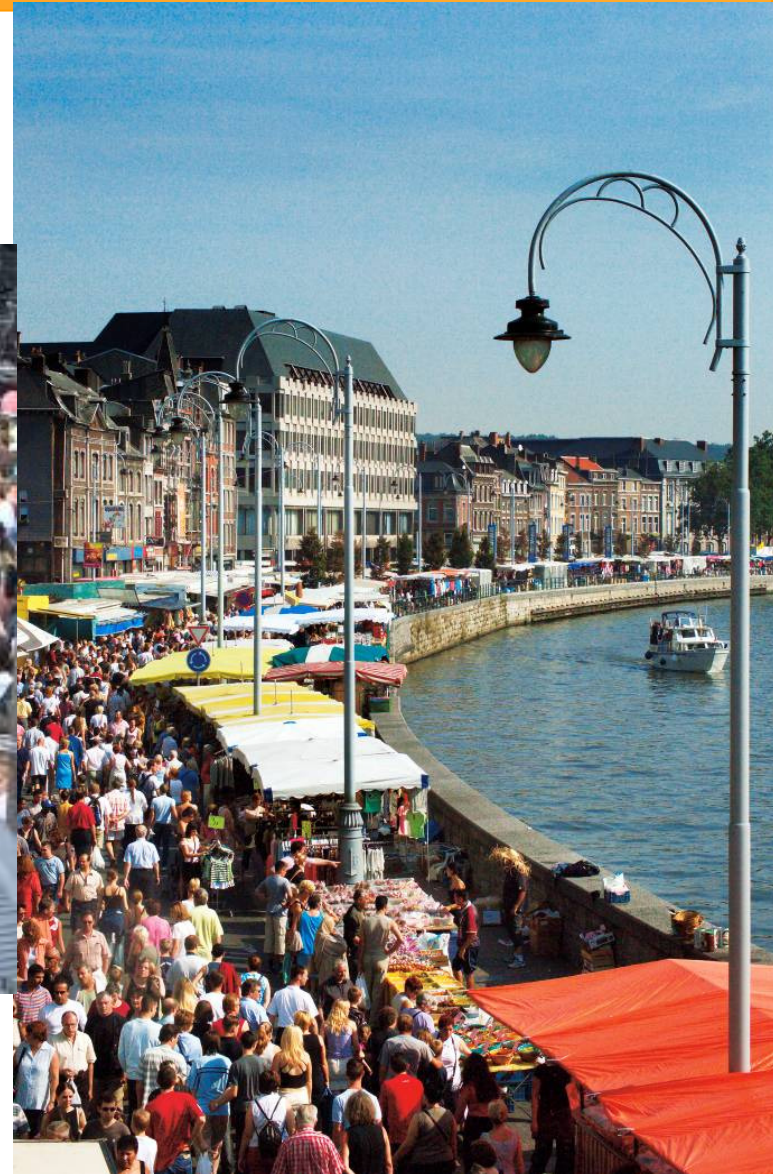
- a dozen theatres
- 30 movie houses
- opera, a philharmonic orchestra
- numerous concert halls
- international festivals for pop and rock music, electronic music and jazz
- international presentations in the area of dance and modern theatre
- ...



Special tariffs for
students



A city full of opportunities



II. The University of Liège





The University of Liège is:

- ✓ *A school that has been in operation for 193 years*
- ✓ *A public and pluralistic university*
- ✓ *Almost 20 000 students - 600 professors - 1700 assistants and researchers*
- ✓ *2000 staff members assigned full or part-time to helping students find what they need at the University*

- ✓ *9 Faculties, 1 Management School et 1 Institute*
- ✓ *530 research team or units*
- ✓ *A scientific research park with 75 spin-offs companies in operation*



The University of Liège is:

- ✓ *50 computer rooms - 600 computers -
a WiFi-enabled campus*
- ✓ *One of the best university libraries in Europe
(more than 3.5 million volumes)*
- ✓ *A state of the art research equipment
(University Hospital on the campus, particle accelerator,
Space Centre, Oceanographic Station, etc...)*



In the city centre





In the city centre





In the city centre



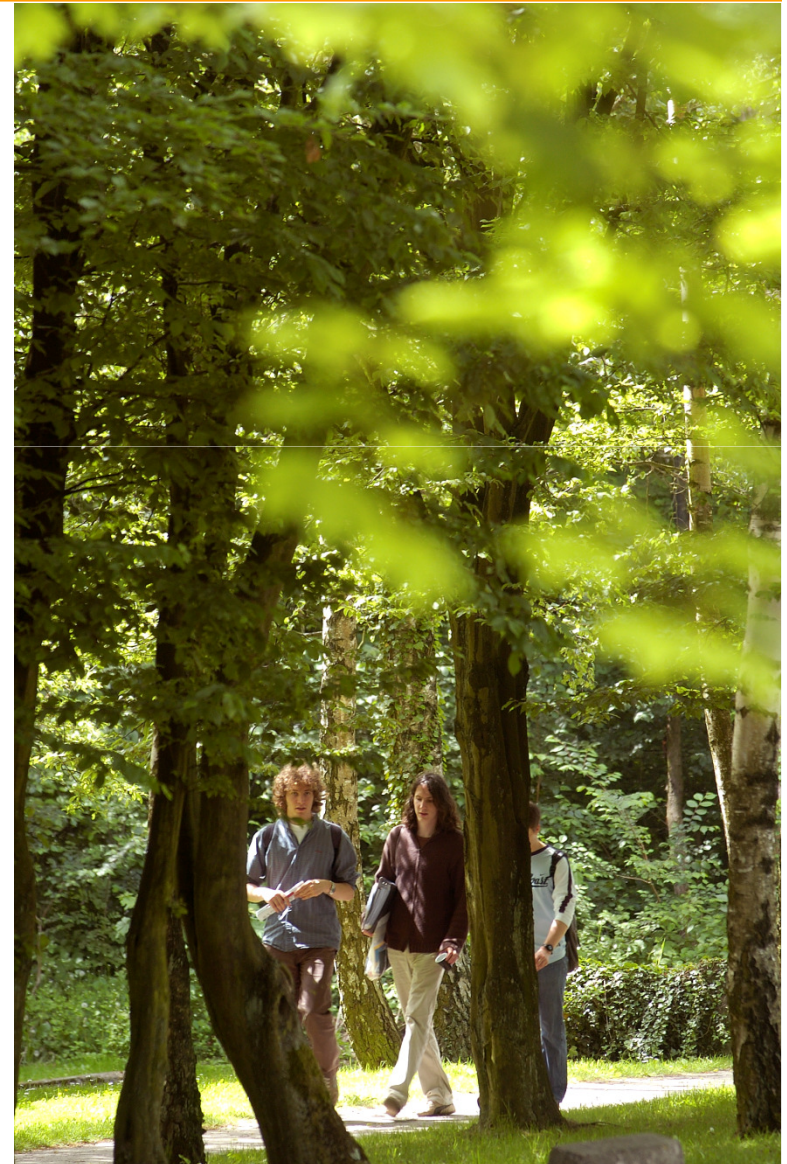


A 750-hectare campus at Sart-Tilman, on the hills overlooking Liège





At Sart Tilman





At Sart Tilman



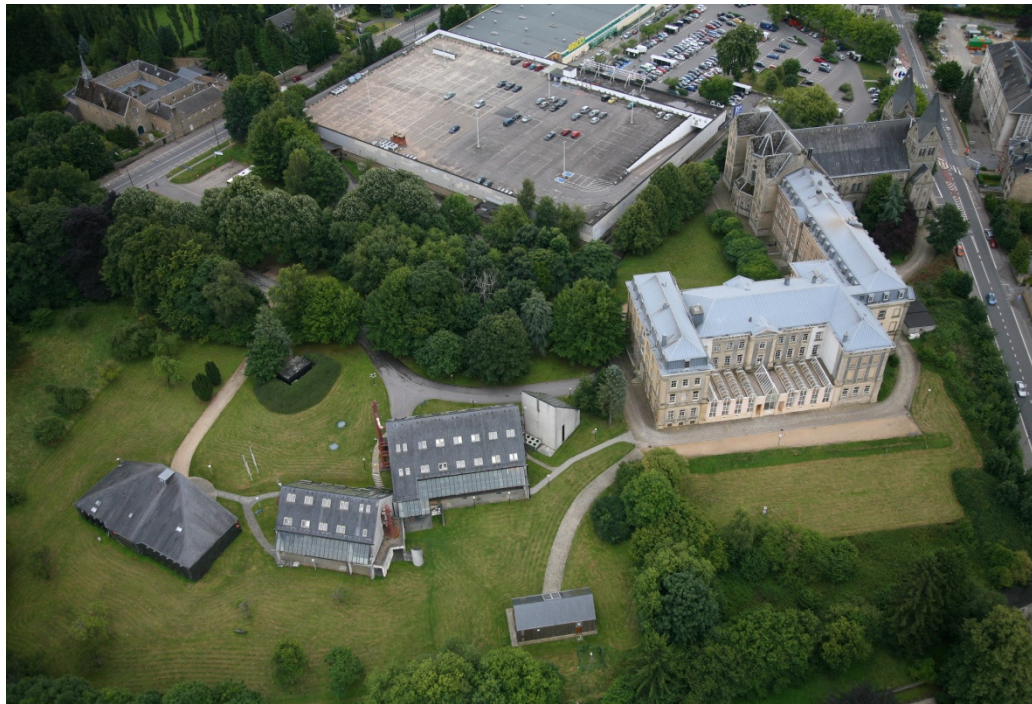


At Sart Tilman





Its science and environmental management courses in Arlon

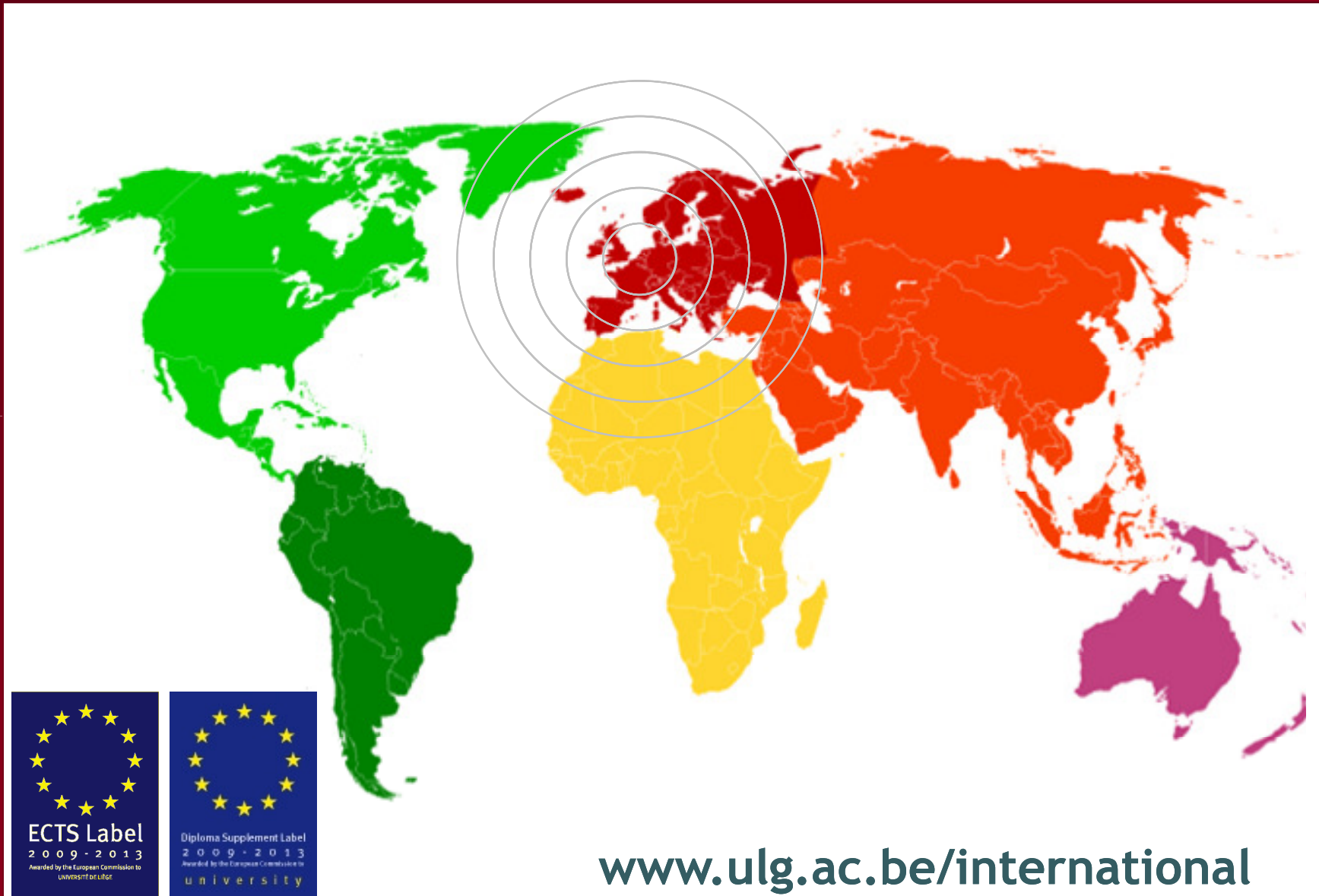




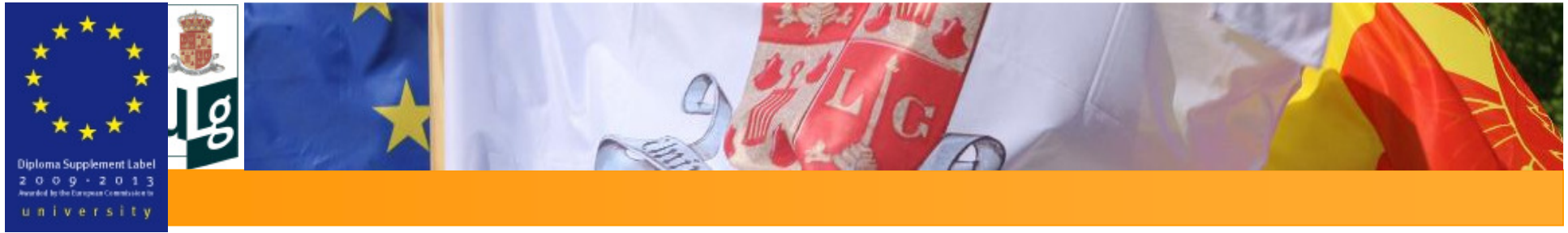
In Gembloux, for the courses in Bio-engineering



III. A university open to the world



www.ulg.ac.be/international



An university open to the world

✓ *Rewarded by the European commission*

- ECTS & DS Label
- only 13 European institutions have been awarded both labels
- criteria : an information package available on line, welcome services for mobile students, a standardised diploma supplement as an aid to help international recognition.





An university open to the world

✓ *Through its international policy*

- host university
- active in development of co-operation
- upon the initiative of numerous international networks
- compulsory language courses
- ...

✓ *Through its students*

- 22 % foreign students from 97 countries
- more than 500 ULg students a year on an exchange programme with 500 foreign students visiting the University





An university open to the world

✓ *Through its network of partners*

- 1200 opportunities to study abroad
- 600 international partner institutions

✓ *Through its co-operations in Europe*

- Erasmus programme
- networks and close collaborations with neighbouring universities (Aachen, Maastricht, Metz, Nancy, Luxembourg, etc.)

✓ *Through its strategic co-operations outside Europe*

- North America
- South America (Chile, Ecuador, Brazil, Mexico)
- Asia (Vietnam, China)
- Africa (Congo, South Africa)



An university open to the world

✓ *Through scientific research*

- 2500 researchers with 10 % mobile
- more than 600 doctors living abroad
- 200 researchers who have gone abroad





An international curriculum at ULg

✓ *A variety of exchange programmes*

- Erasmus
- Erasmus Belgica
- Magellan CREPUQ network
- Léonardo

✓ *Mobility leading to a qualification*

- TIME (engineers)
- Erasmus Mundus - Master « Fame »
(Fonctionalized Advanced Materials
and Engineering)
- Tempus project (geomatics)
- double doctorate
- ...





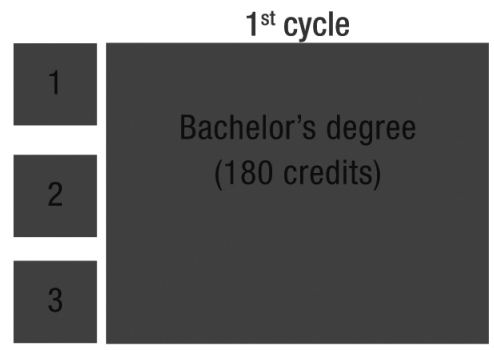
Student mobility assistance at ULg

- financial aid
- language classes before going abroad
- on-site mentoring by a former Erasmus student
- intercultural preparation

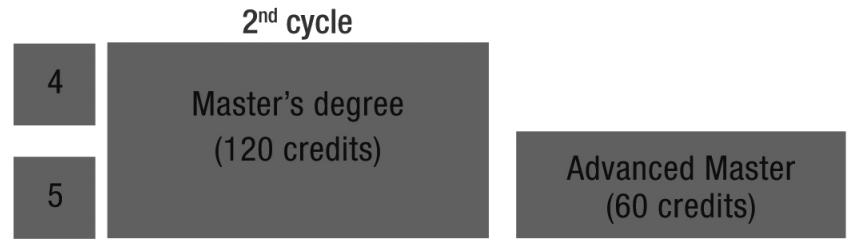


IV. Structure of studies in French-speaking Belgium



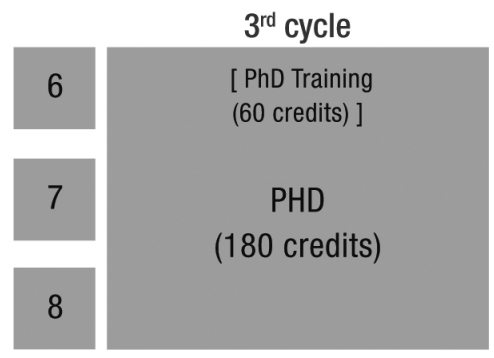


Credit = ECTS
1 year = 60 credits



120 credits Master (MA)

- european master
- international recognition
- accessible mobility programmes
- allows access to complementary masters and the 3rd cycle
- specialised master
- **Veterinary Medicine : 180 crédits**
Medicine : 240 crédits





Masters

Different « focus »

✓ **Research focus:**

- in-depth study of a particular subject
- preparation for scientific research + general training as a researcher

✓ **Professional focus:**

- preparation for a professional specialisation in a particular discipline

✓ **Teaching focus:**

- to become a teacher of higher education in **French-speaking Belgium**



2nd cycle

4	Master's degree (120 credits)	Advanced Master (60 credits)
5		



Advanced Master

- Access to certain professions or specialisation in a very precise domain
- 60 credits minimum after a master worth 120 credits

3rd cycle

6	[PhD Training (60 credits)]
7	PHD (180 credits)
8	



PhD

- includes **PhD training** linked to the specific competences of the research teams (high scientific and professional qualification)



V. Making the most of specialised and unique courses





Studies

✓ *38 bachelors degree programmes*

✓ *193 masters degree programmes*

- ➔ 33 % are the only ones of their kind offered in French-speaking Belgium
- ➔ hundreds of modules and options
- ➔ just as many placements

✓ *68 advanced masters*

✓ *PhDs in all areas*

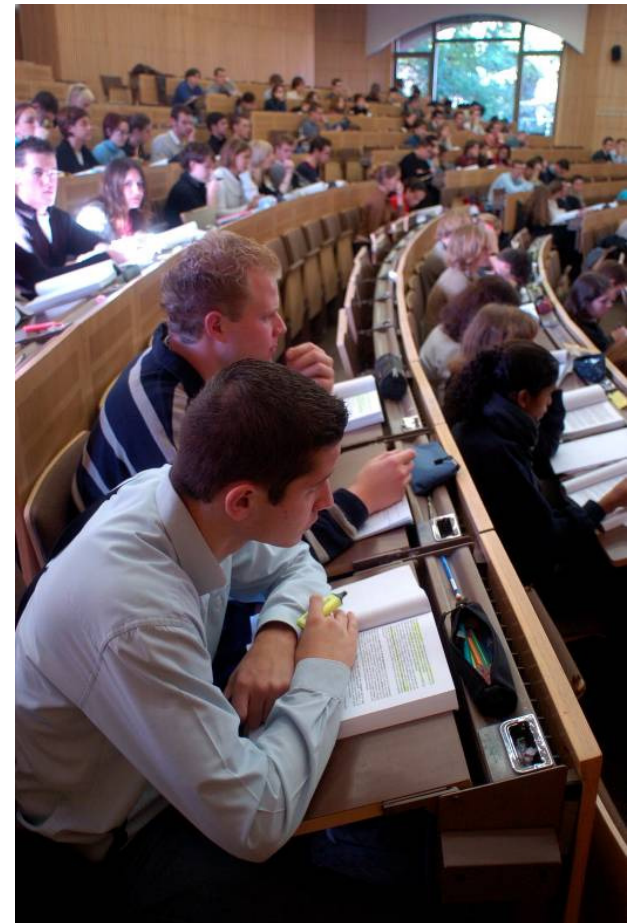
- The only complete public university in the French-speaking community of Belgium
- The possibility of putting together a personalised course





Significant assets for a future European graduate!

- ✓ *Teaching in line with the evolution of the employment market*
- ✓ *Course focus on a close link between research and professional practice*
- ✓ *In-depth specialisations, a transdisciplinary approach*
- ✓ *Recognised expertise in five sectors*





Train to study and save our environment





Train to study and save our environment

✓ *Bioengineering*

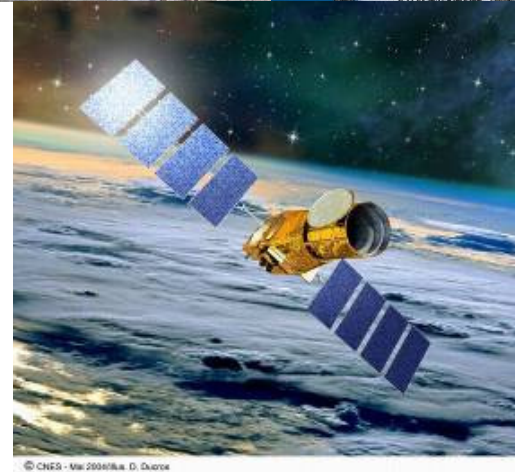
✓ *Oceanography*

✓ *Climatology*

✓ *Hydrology*

✓ *Water Resources*

✓ *Space Sciences
(earth and planet sciences)*





Train to study and save our environment

- ✓ *Biology of Organisms and Ecology*
- ✓ *Biotechnology and Applied Biology*
- ✓ *Aquaculture*
- ✓ *Geological Sciences*
- ✓ *Natural hazards Management*
- ✓ *Environmental geology*





Train to study and save our environment

- ✓ ***Environmental Management (sustainable management, energy, technologies, monitoring, developing countries, etc.)***
- ✓ ***Environment and civil engineering***
- ✓ ***Transportation Management***
- ✓ ***Urban and Regional Planning***
- ✓ ***Environment and safety***
- ✓ ***Mechanical Engineering (sustainable automotive technologies)***





Start up, develop and manage





Start up, develop and manage

✓ *Management (full English program)*

Specialized approach : Human Management and Organization, Banking and Asset management, Financial Analysis and Audit, Strategic Intelligence & Marketing, Social Economy company Management, Entrepreneurship

✓ *Business engineering*

Supply Chain Management, Financial Engineering, Performance management systems, Intrapreneurship

✓ *Financial Risk Management*

✓ *Management of Human Resources*

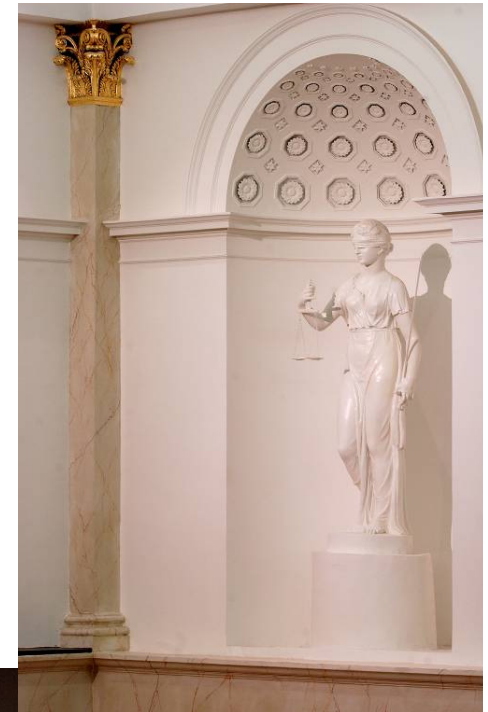
✓ *Risk Management and Well-Being in the Workplace*





Start up, develop and manage

- ✓ *International economy, regulation, competition*
- ✓ *Transportation Management*
- ✓ *Economic geography (business localisation)*
- ✓ *Business law*
- ✓ *European Law*
- ✓ *Tax Law (International, European and compared taxation...)*
- ✓ *International Relations*
- ✓ *European Studies*





Explore the living





Explore the living

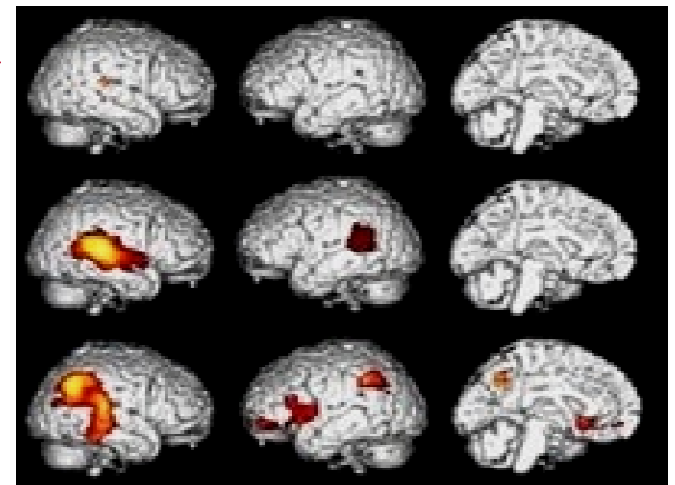
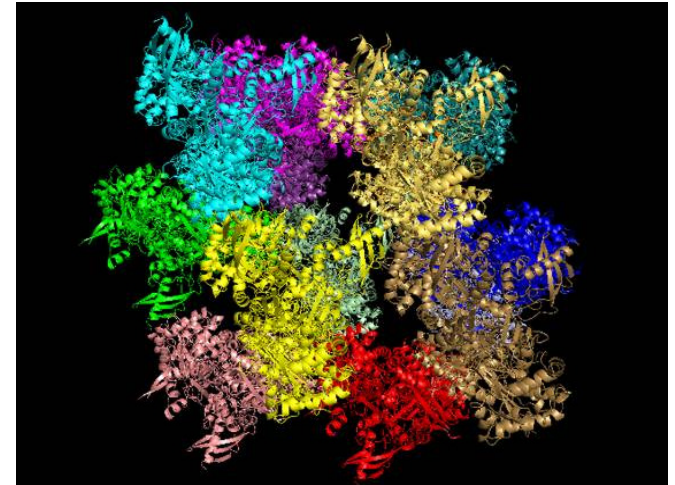
- ✓ *Cancer research, immunology*
- ✓ *Biochemistry and Molecular and Cell Biology (virology, genetics, bacteriology, protein studies, industrial biochemistry, etc.)*
- ✓ *Genoproteomics*
- ✓ *Bio-informatics and Modelling*
- ✓ *Chemical biology*





Explore the living

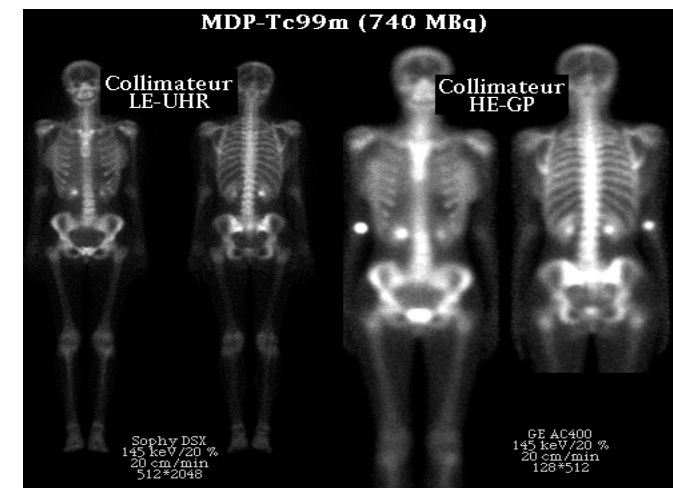
- ✓ *Medicine*
- ✓ *Veterinary Medicine vétérinaire*
- ✓ *Bioanalysis, drug design and development*
- ✓ *Clinical Biology*
- ✓ *Hospital Pharmacy et Industrial Pharmacy*
- ✓ *Food sciences*
- ✓ *Neuropsychology, neurosciences*





Explore the living

- ✓ *Biotechnology and Applied Biology*
- ✓ *Nanotechnology*
- ✓ *Medical radiophysics*
- ✓ *Biomedical Engineering (Imagery and bioinstrumentation, bioinformatics and modelling, biomechanics...)*
- ✓ *Materials Engineering*
- ✓ *Technology management and innovation*





Observe, analyse, think. The culture between tradition and modernity





Observe, analyse, think. The culture between tradition and modernity

- ✓ *History of Art and Archaeology (from prehistory to the present day)*
- ✓ *Museology*
- ✓ *Musicology*
- ✓ *Archaemetry*
- ✓ *Conservation and Restoration of Immovable Cultural Patrimony*





Observe, analyse, think. The culture between tradition and modernity

- ✓ *Philosophy*
- ✓ *History*
- ✓ *Modern and ancient languages and literatures - French as a Second Language*
- ✓ *Journalism, scientific popularisation, cultural mediation, professions in printing and publishing*
- ✓ *Migrations, Arab-Muslim worlds and cultural diversity*
- ✓ *Development and international cooperation - Contemporary China*





Observe, analyse, think. The culture between tradition and modernity

- ✓ *Intellectual property rights*
- ✓ *Digital shows and images - film documentaries*
- ✓ *Electronics - digital processing, audio/video techniques*
- ✓ *Physical electronics*
- ✓ *Nanotechnology*





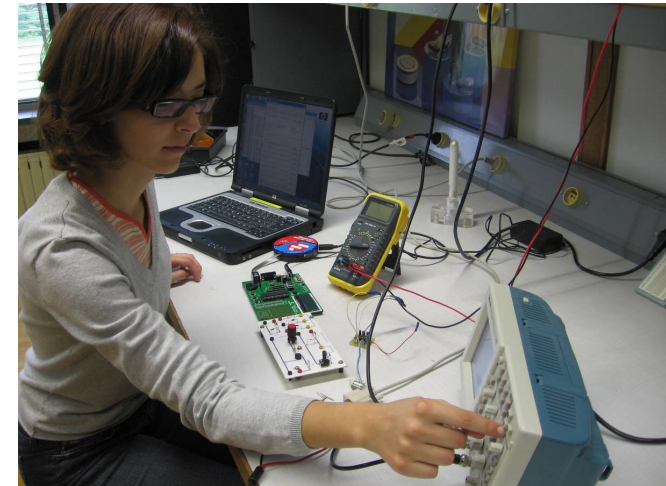
Learn and develop techniques for the space and construction industries





Learn and develop techniques for the space and construction industries

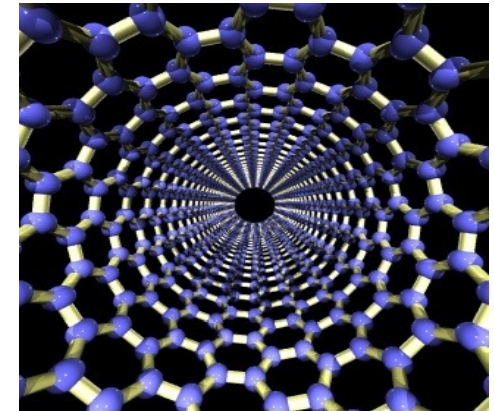
- ✓ *Electrical Engineering (electronic)*
- ✓ *Electro-mechanical Engineering*
- ✓ *Computer (microsystems, expert systems, etc.)*
- ✓ *Mechanical Engineering (mechanical and production engineering)*





Learn and develop techniques for the space and construction industries

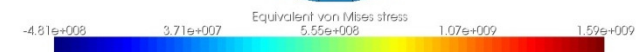
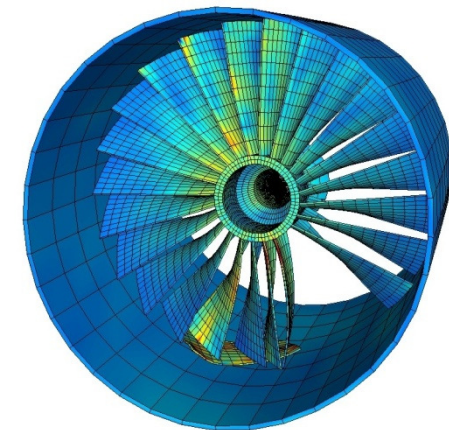
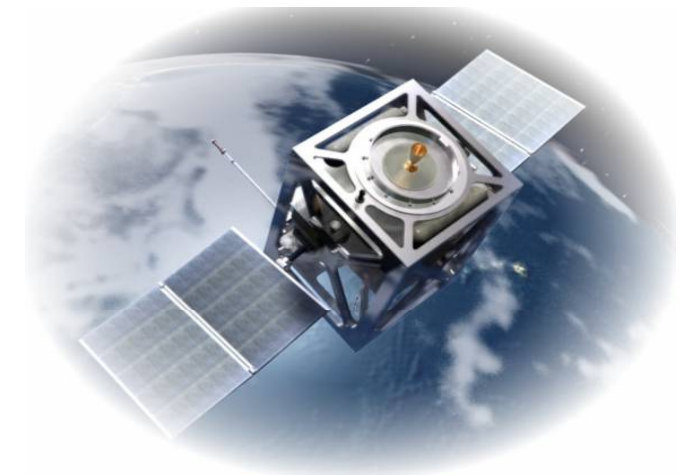
- ✓ *Naval Construction*
- ✓ *Civil engineering*
- ✓ *Geology applied to civil engineering works*
- ✓ *Materials Engineering*
- ✓ *Architecture and urban planning, building engineering*
- ✓ *Urban and Regional Planning*
- ✓ *Architecture*





Learn and develop techniques for the space and construction industries

- ✓ *Geometrology*
- ✓ *Physics*
- ✓ *Space Sciences (astrophysic, Space technology, aeronautics)*
- ✓ *Geomatics*
- ✓ *Aerospace engineering (Space technology, aeronautics)*





A ULg diploma: guaranteed access to the profession in Europe

- ✓ *Diplomas recognised in the European Union*
- ✓ *Free circulation of graduates (European directives)*
- ✓ *For some professions, possible additional formalities (seek information from the appropriate ministry in the considered country)*





ULg, a partner to its graduates

- ✓ *Accompanying graduates to their first job and after one or more professional experiences (career redefinition)*
- ✓ *Individual Coaching*
- ✓ *Receiving companies for possible recruitments*
- ✓ *Possibility of management training for all graduates*
- ✓ *A wide range of in-house training possibilities*
- ✓ *A graduate network*



VI. Specific aid for international students





Welcome and integration

- ✓ ***Welcome days***
 - At the beginning of each four-month period

- ✓ ***Guided visits on foot or by bike***
 - Campus
 - Liège (exceptional surroundings, shopping centres, banks, etc)

- ✓ ***Invitation to cultural events***





Accommodation

✓ *Halls of residence on campus*

- average price: € 9 / day
- single furnished room



✓ *Private accommodation - « kot »*

- more than 7000 rooms/flats in the city centre
- average price: € 230 / month, utilities included
- list of addresses online www.logement.ulg.ac.be - www.kotaliege.be

✓ *Help in finding the right solution for you*

- Accommodation Service www.logement.ulg.ac.be



- An exceptional offer of accommodation
- The cheapest city in Belgium!



Language classes

- English
- German
- Dutch
- Spanish
- Italian
- Arabic
- Russian
- Chinese
- Japanese
- Danish
- Polish
- Portuguese
- Turkish

French classes

- All year round, during the day and during the evening
- Intensive courses in July and August
- Preparatory classes at the beginning of every four-month period





Educational support

Faculty staff are there to provide support

- 592 teaching staff
- more than 650 assistants
- councils of the studies

Tools

- distance learning - podcastable classes and practical work
- computer media on the internet (films, PowerPoint presentations, software)





Study facilities

✓ *Individual coaching*

- work management, organisation, methodology
- looking for a job

✓ *Group and themed courses*

- preparation for final thesis
- stress management

✓ *Online*

- work method modules

✓ *Individualised correspondence*

- advice during key periods

✓ *Free telephone line in case of personal difficulties*

- people to listen to you during study sessions and examination sessions





Logistics support

- Free Internet access
- Participation in the Eduroam project
- 50 computer rooms and more than 600 computers - Wifi - Podcast - Free e-mail address
- myULg student portal

Administrative and practical support

- Faculty secretariats
- Social Service - Accommodation Service
- Services Promotion et Information on the Studies - Registrations - Admissions - International Relations
- Students Federation





Health and safety

Your health and safety: a priority

- Regular “quality of life” actions (cardiovascular tests, health week, etc.) - “health” info - safety instructions



Médicaments



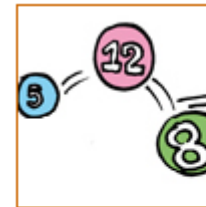
Mémorisation



Qualité de vie



Stress



Plaisirs et
dépendances



Tabac
(alcool à venir
prochainement)

- Family Planning Centre
- Managing disability

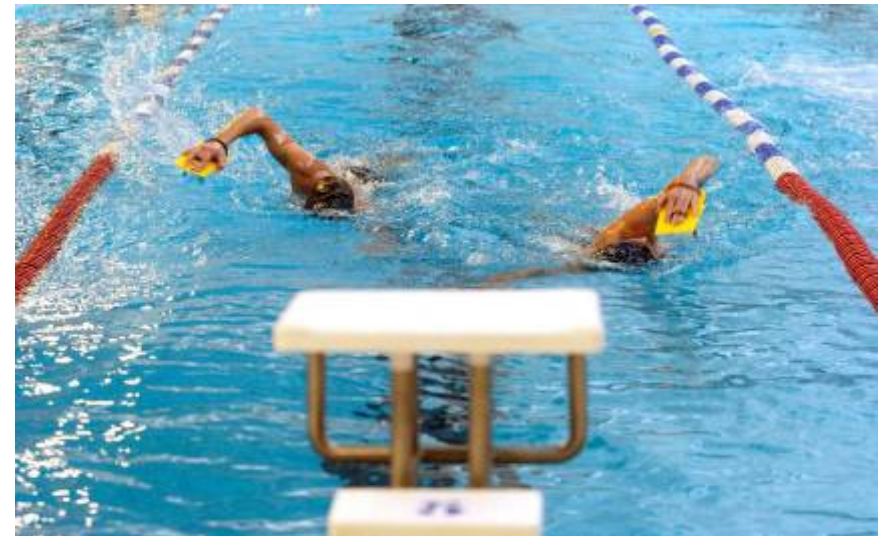
VII. Culture, sport and student life at ULg





Sport

- more than 50 physical and sporting activities on campus
- sports centres at Sart Tilman (sports grounds, athletics tracks, swimming pool, etc.)
- aid for high-level sportsmen and women



Culture

- museums - Art Collections
- movie clubs
- lectures
- university Theatre
- shows
- choir
- ...





Students associations

- The « Fédé »: students Federation
- Faculty and interfaculty student circles
- 48 FM, the student radio station
- Unifestival, the University of Liège's student festival (more than 8000 participants every year)
- ...



VIII. Admissions procedure





Admission to ULg: simple and fast!

*send your application to the
Admissions Department*



examined by the jury



letter authorising your enrolment



**A decision in
30 days!**



enrolment at the University of Liège



Some of the lowest enrolment fees in Europe

✓ **835 € for one year of study**

(cost in 2010-2011)

✓ **Fast and simple payment**

- by credit card when you enrol (Visa, Mastercard, Eurocard)
- by bank or post office transfer





At ULg, no quota, no entrance exam, except for...

- ✓ *Veterinary Medicine*
- ✓ *Physiotherapy and Rehabilitation*
- ✓ *Speech and Language Therapy*



quota of “non-residents” (lottery)
www.ulg.ac.be/vete-kine-logo

Command of the French language

- ✓ *Enrolment for 2nd cycle: official proof of knowledge of French*
 - compulsory if previous studies completed in a language other than French
 - standardised test: DELF, DALF, TEF, TCF, etc.
 - level B1 in accordance with the European reference framework
- ✓ *Enrolment for 3rd cycle: no exam or official proof*



How to apply

- Application form (www.ulg.ac.be/admissions)
- Possibility of applying online
- Deadline: 31 August

Papers required ?
Request for equivalence ?

...

- 
- www.ulg.ac.be/admissions
 - « Admission Procedures »

Étudiant international
Set
d'Admission

www.ulg.ac.be/admissions



Choosing the University of Liège

- open up to the world
- open up to excellence

www.ulg.ac.be



Université
de Liège



Photos : ©ULg - TILT - Wertz - Denoël - Centre Spatial -
Office du Tourisme de la Ville de Liège - Union Européenne